



# Lyneham Banks Repairs

22/6/2023

Royal Wootton Bassett & Cricklade  
Area Board Meeting

**Wiltshire Council**



**Current situation**



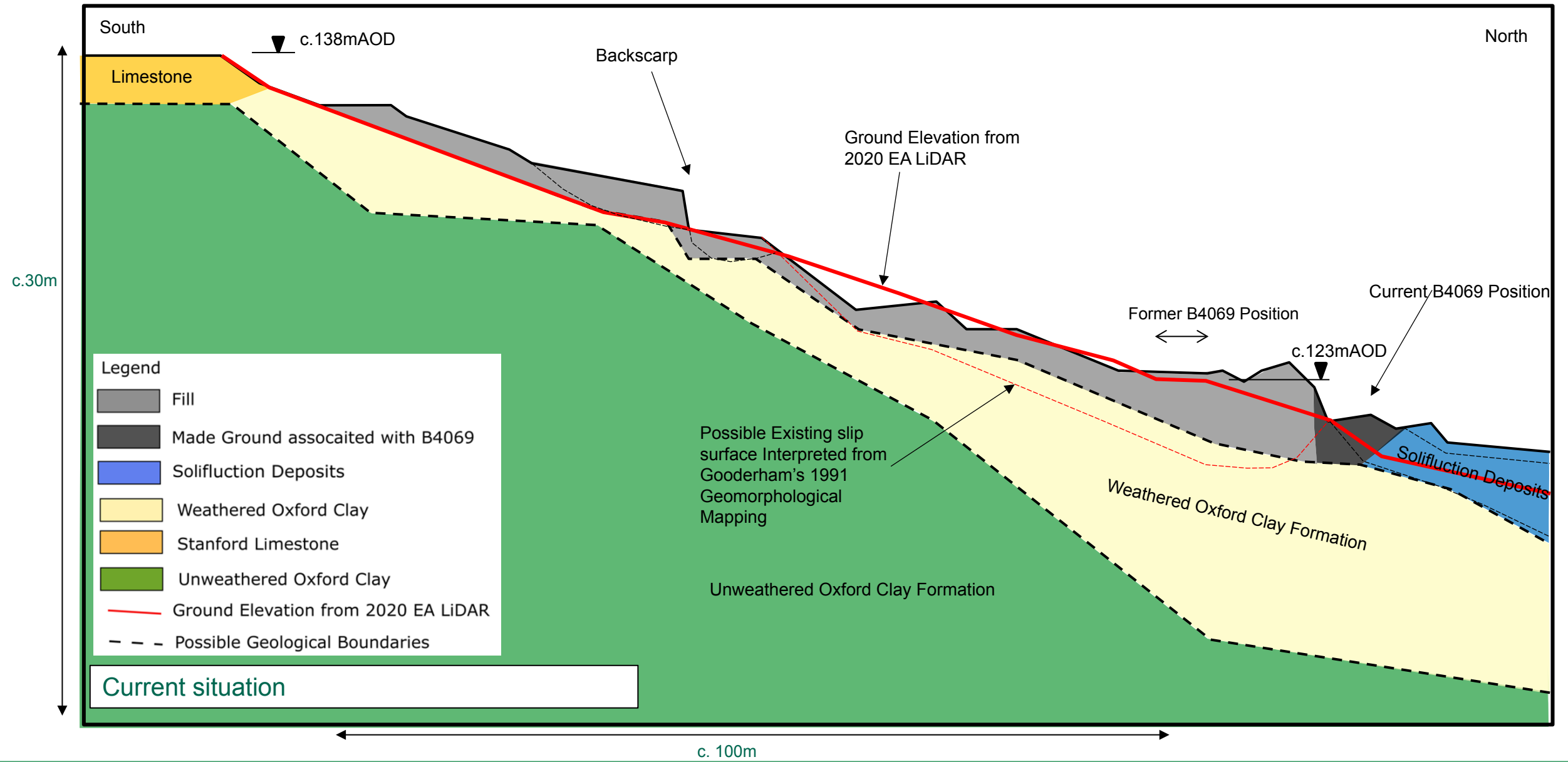
Main landslip area

B4069

Motorholics



*Background taken from Google Maps*





# Preliminary options

## Options

Main areas of required remediation:

- A) Upper slope (main body of landslide)
- B) Road corridor (B4069)
- C) Lower slope

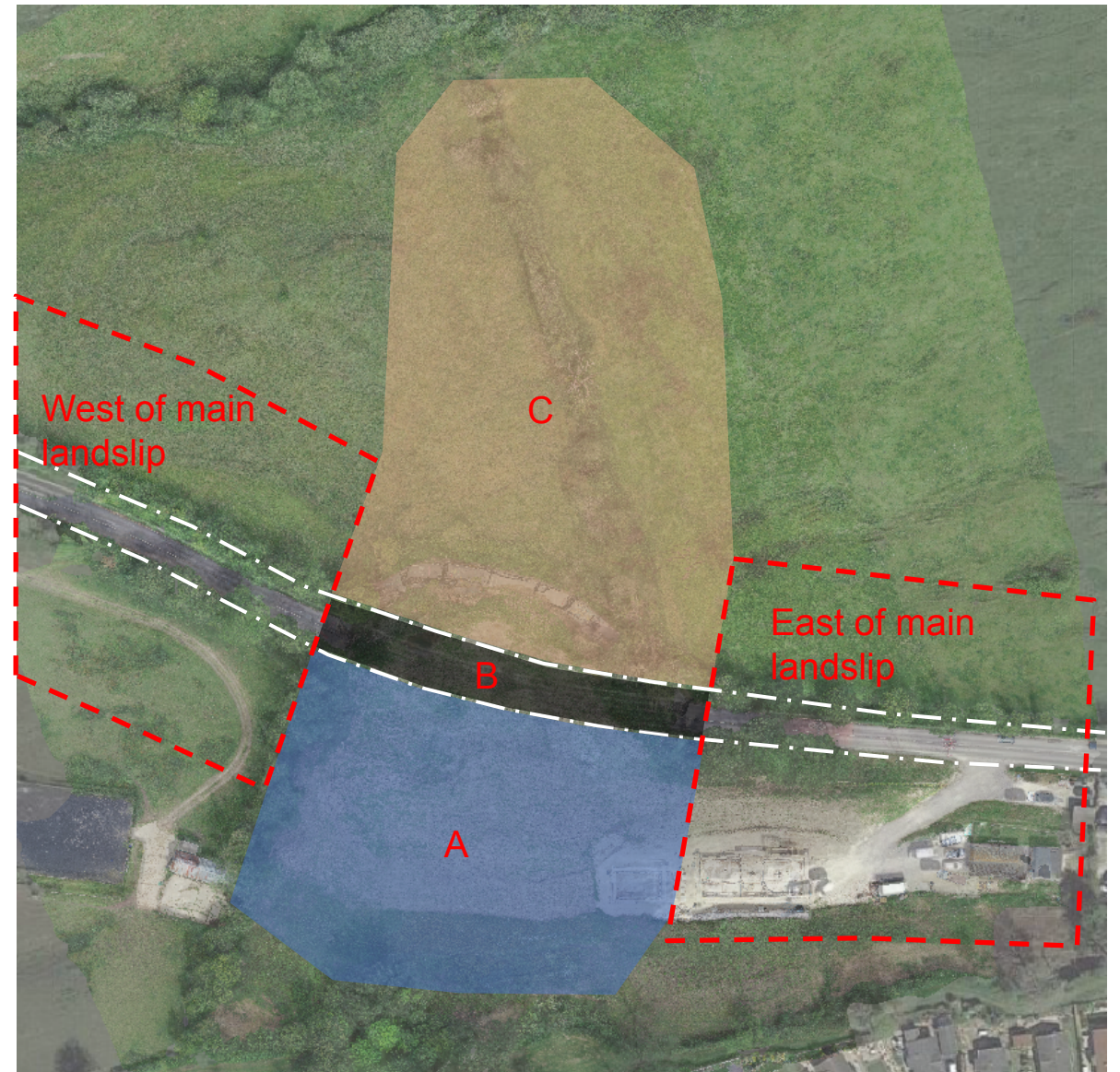
## Secondary areas:

### Area west of main landslide

*Road is still intact but area of previous road cracking*

### Area east of main landslide

*Road is still intact but built on relict slip (pre-1991 mapping) and land has been raised by developer*



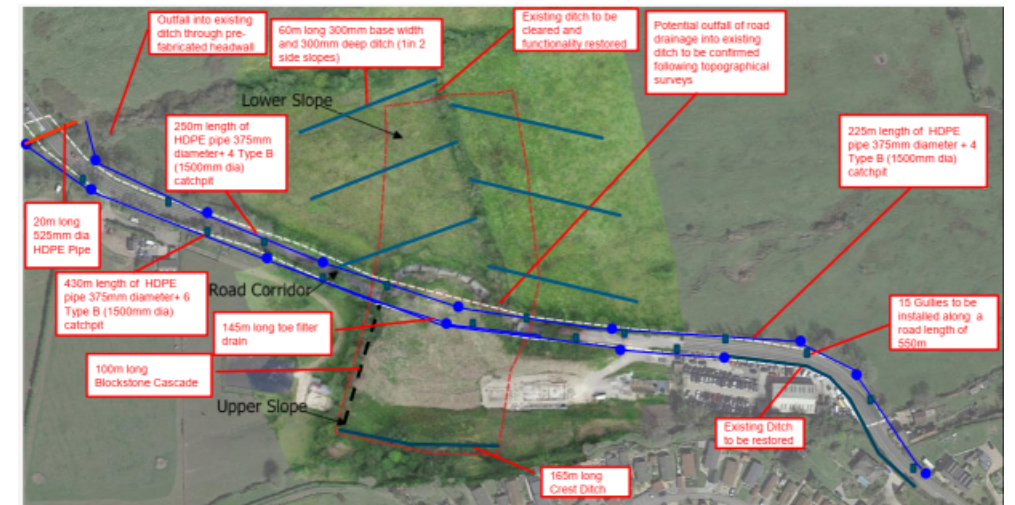
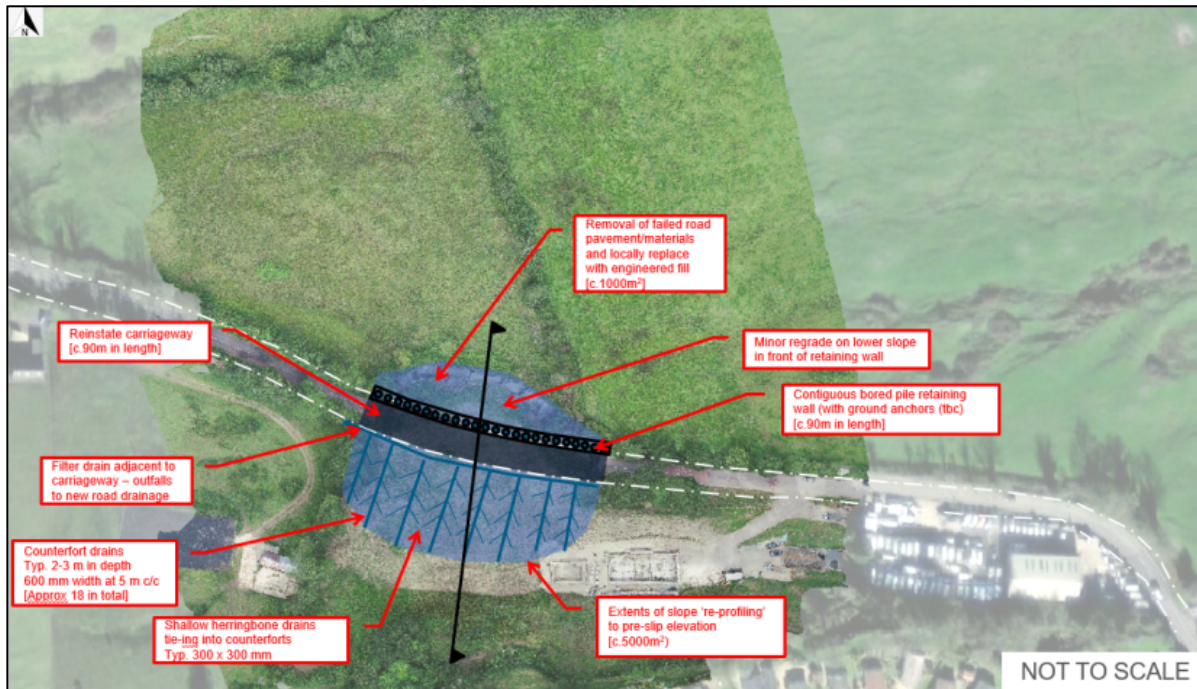
# Assessment criteria

- Construction type and buildability
- Capital cost
- Whole life costs/maintenance
- Health and safety
- Environment/carbon
- Programme
- Land requirements

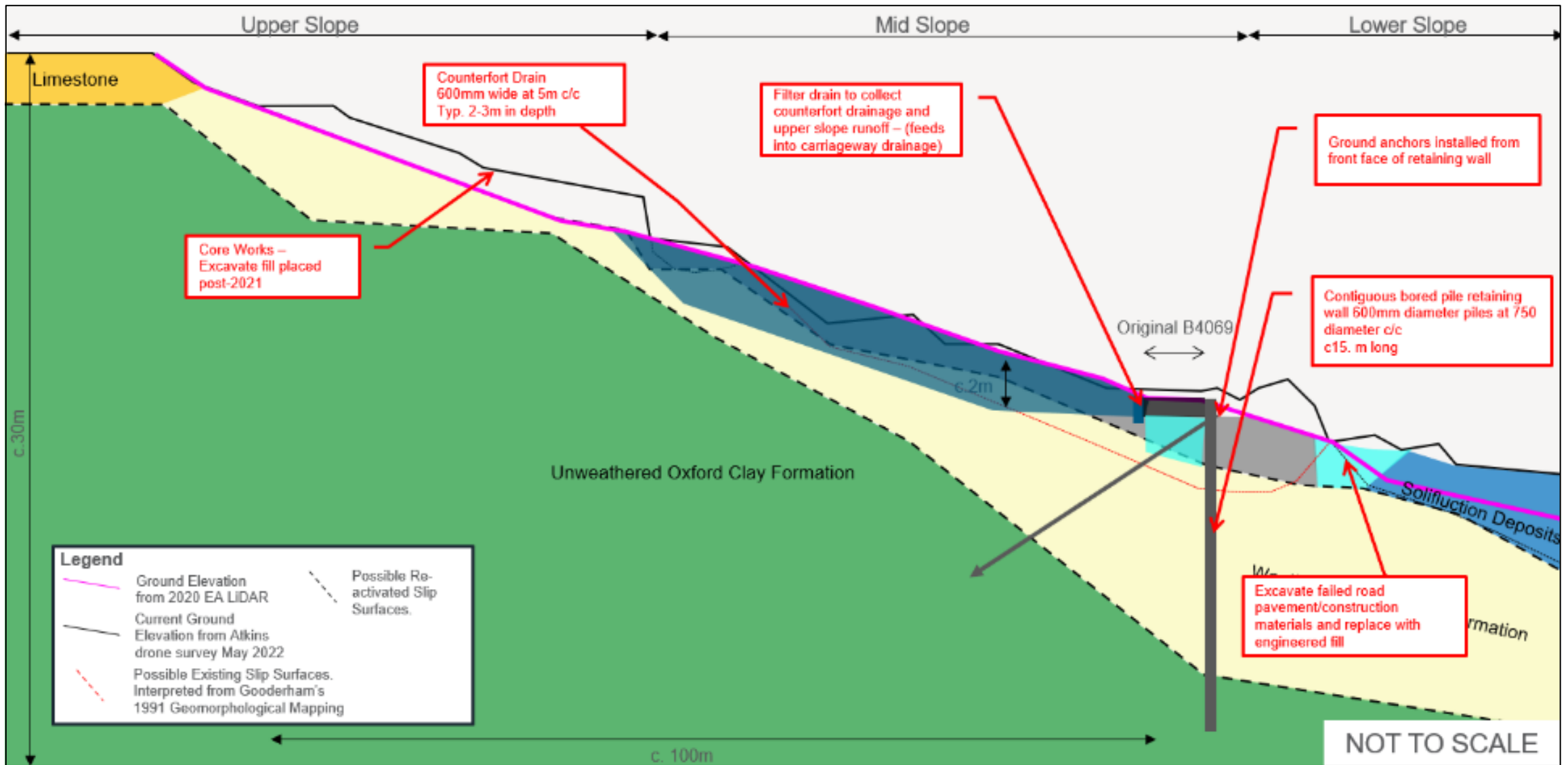


# Options selection outcome

- Core works – earthworks and drainage
- Option 3 – piled retaining wall with counterfort drainage

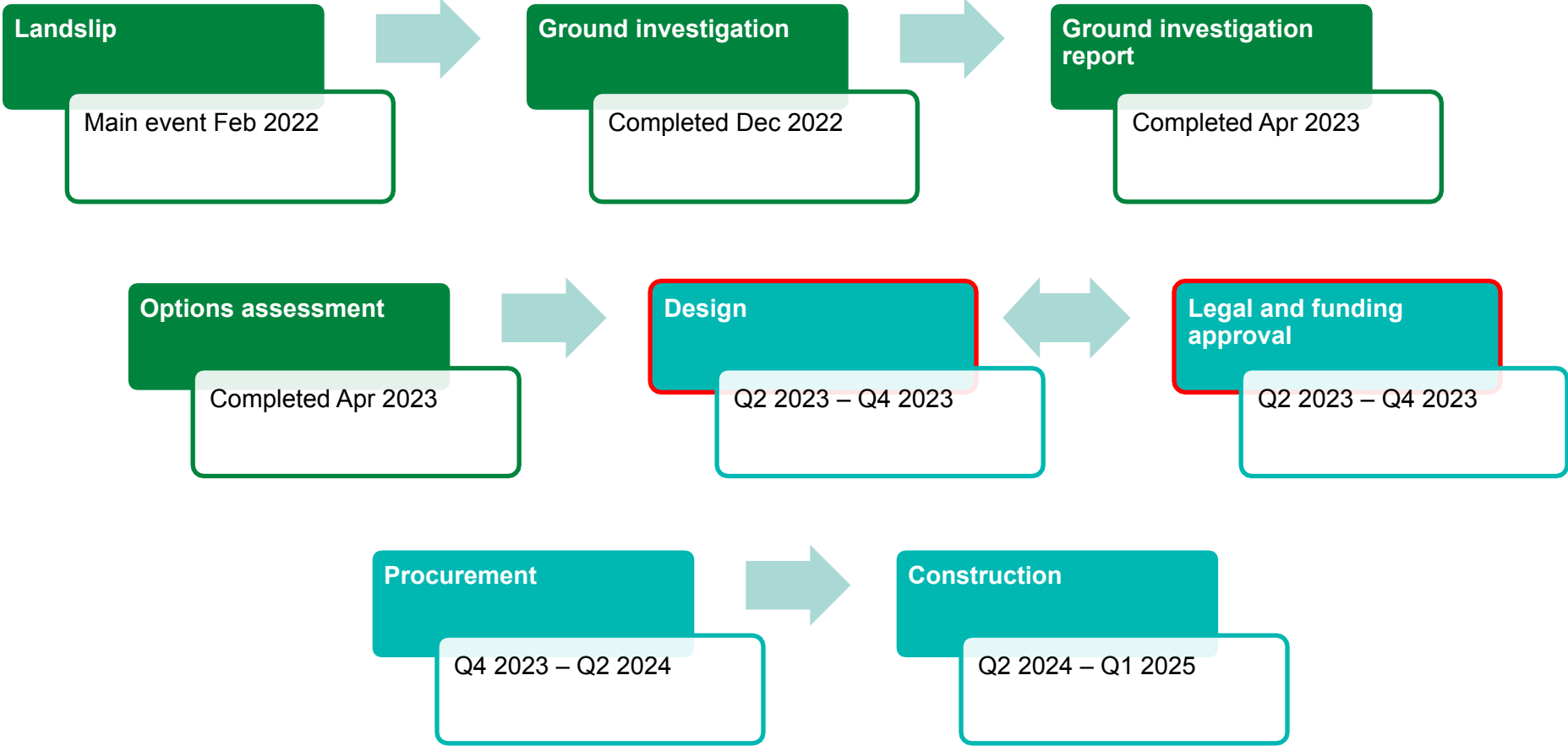


Final proposals will be subject to detailed design



## Option 3 – piled retaining wall

# Assumed Timeline



- Funding
- Land / legal agreements
- Wiltshire Cabinet decisions required



# Communications

- Dedicated website  
[www.wiltshire.gov.uk/highways-b4069-lyneham-banks](http://www.wiltshire.gov.uk/highways-b4069-lyneham-banks)
- Quarterly newsletter (next in May 2023)
- Updates to local meetings
- Dedicated email address  
[lynehambanks@wiltshire.gov.uk](mailto:lynehambanks@wiltshire.gov.uk)

